

Commercial Vehicle Tyres Delivery Range

Regrooving recommendations
Specifications



Barum 

Good tyres. Good deal.

Barum FRONT

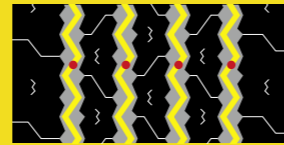
BF 15

For short and long distance service

265/70 R 19.5 136/134 M ¹⁾
 295/80 R 22.5 152/148 M ²⁾
 315/80 R 22.5 154/150 M (156/150 L) ²⁾



Regrooving:



Depth (mm)	Width (mm)
¹⁾ 3.0	10.0
²⁾ 3.5	10.0

Barum FRONT

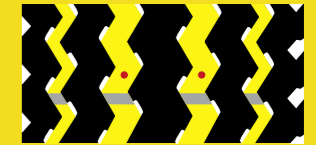
BF 13

For short distance service

11.00 R 20 150/146 K
 12.00 R 20 154/149 K



Regrooving:



Depth (mm)	Width (mm)
3.5	5.0; 13.0

BF 15

For short and long distance service

315/70 R 22.5 152/148 L (154/150 K)

Tread variant



Regrooving:



Depth (mm)	Width (mm)
3.0	10.0

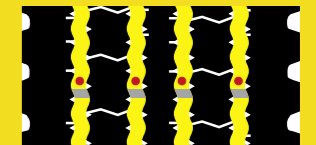
BF 12

For short and long distance service

11 R 22.5 148/145 L
 12 R 22.5 152/148 L (150/148 M)



Regrooving:



Depth (mm)	Width (mm)
3.5	14.0

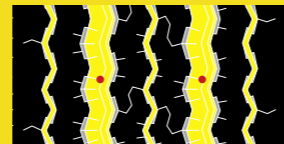
BF 14

For light trucks in short and long distance service

205/75 R 17.5 124/122 M ¹⁾
 215/75 R 17.5 126/124 M ²⁾
 235/75 R 17.5 132/130 L ¹⁾



Regrooving:



Depth (mm)	Width (mm)
¹⁾ 2.5	A: 7.0 - 8.0;
²⁾ 2.0	B: 3.0 - 4.0

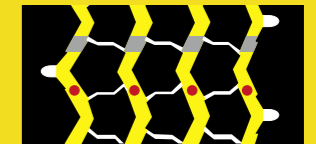
NR 32

For short distance service

11.00 R 20 149/145 K



Regrooving:



Depth (mm)	Width (mm)
3.5	7.0 - 8.0

Barum DRIVE

BD 23

For the drive axle of light trucks in short and long distance service

215/75 R 17.5 126/124 M



Regrooving:



Depth (mm)	Width (mm)
2.5	7.0 - 8.0

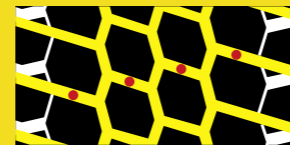
BD 22

For the drive axle in short and long distance service

295/80 R 22.5 152/148 M
315/80 R 22.5 154/150 M (156/150 L)
315/70 R 22.5 152/148 L (154/150 K)
12 R 22.5 152/148 L



Regrooving:



Depth (mm)	Width (mm)
3.5	8.0 - 10.0

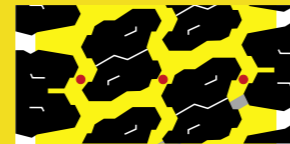
BD 21

For the drive axle in short and long distance service

11 R 22.5 148/145 L



Regrooving:



Depth (mm)	Width (mm)
3.5	8.0 - 10.0

Barum TRAILER

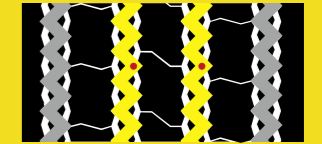
BT 43

For all axles of trailers and semi-trailers in short and long distance service

215/75 R 17.5 135/133 J ¹⁾
235/75 R 17.5 143/141 J ²⁾
245/70 R 17.5 143/141 J ²⁾
265/70 R 19.5 143/141 J ³⁾
385/65 R 22.5 160/ - K ⁴⁾
425/65 R 22.5 165/ - K ⁴⁾
445/65 R 22.5 169/ - K ⁵⁾

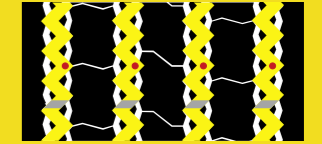


Regrooving:



Depth (mm)	Width (mm)
¹⁾ 2,5	10,0
²⁾ 3,0	10,0

Regrooving:



Depth (mm)	Width (mm)
³⁾ 3,0	10,0
⁴⁾ 3,5	12,0
⁵⁾ 4,0	12,0

BT 41

For all axles of trailers and semi-trailers in short and long distance service

445/65 R 22.5 168/ - K



Regrooving:



Depth (mm)	Width (mm)
3.0	16.0

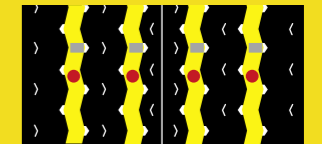
NR 52

For all axles of trailers and semi-trailers in short and long distance service

365/80 R 20 160/ - K



Regrooving:



Depth (mm)	Width (mm)
3.0	14.0

Barum UNIVERSAL

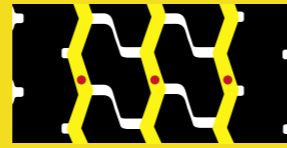
BU 54

For on and off-road use on all axles

315/80 R 22.5 156/150 K
 12 R 22.5 152/148 K
 13 R 22.5 154/150 K (156/150 G)



Regrooving:



Depth (mm)	Width (mm)
3,5	10,0

Barum UNIVERSAL

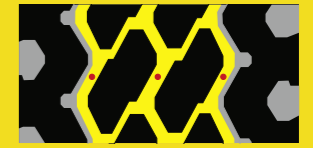
BU 51

For on and off-road use on all axles

12.00 R 20 154/149 K



Regrooving:



Depth (mm)	Width (mm)
4,0	12,0

BU 53

For on and off-road use on all axles

315/80 R 22.5 156/150 K ¹⁾
 11 R 22.5 148/145 K ²⁾
 12 R 22.5 152/148 K ¹⁾



Regrooving:



Depth (mm)	Width (mm)
1) 3,5	A:10,0; B:8,0
2) 4,0	A:10,0; B:8,0

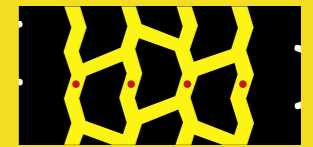
BU 49

For on and off-road use on all axles

385/65 R 22.5 160 K



Regrooving:



Depth (mm)	Width (mm)
3,5	13,0

BU 52

For on and off-road use on all axles

13 R 22.5 154/150 K



Regrooving:



Depth (mm)	Width (mm)
3,5	14,0

Barum SPECIAL

BS 73

High-traction tyre for on and off-road usage

315/80 R 22.5 156/150
12 R 22.5 152/148
13 R 22.5 154/150K (156/150G)



Regrooving:



Depth (mm)	Width (mm)
3.5	10.0

Barum SPECIAL

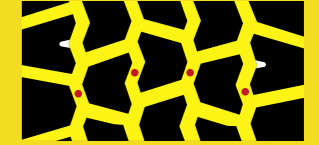
BS 49

High-traction tyre for on and off-road usage

445/65 R 22.5 169/ - K



Regrooving:



Depth (mm)	Width (mm)
3.5	A: 15; B: 13

BS 72

High-traction tyre for on and off-road usage

315/80 R 22.5 156/150 K ¹⁾
12 R 22.5 152/148 K ²⁾
13 R 22.5 154/150 K



Regrooving:



Depth (mm)	Width (mm)
¹⁾ 3.0	6.0 - 8.0
²⁾ 3.5	

NR 55

High-traction tyre for on and off-road usage

11.00 R 20 150/146 K



Regrooving:



Depth (mm)	Width (mm)
4.0	15.0

BS 71

High-traction tyre for on and off-road usage

12.00 R 20 154/149 K



Regrooving:



Depth (mm)	Width (mm)
4.0	17.0

Specifications

Size	Operating code					Rim		Tyre dimensions					Load index LI	Tyre fitment	Load capacity (kg) per axle at inflation pressure ³⁾ (bar) (psi)										
	Pattern	LI/SI ¹⁾	PR	Speed Index and ref. speed (km/h)	TT/TL ²⁾	Rim width	Distance between rim centres	Max. standard value in service		Actual value		Stat. radius ± 1,5 %			Rolling circumference ± 2 %	4,5 (65)	5,0 (73)	5,5 (80)	6,0 (87)	6,5 (94)	7,0 (102)	7,5 (109)	8,0 (116)	8,5 (123)	9,0 (131)
								Width	Outer-Ø	Width + 1 %	Outer-Ø ± 1 %														
6.50 R 20	NR 21	115/113 L	10	L 120	TL	4.50	200	186	874	180	860	406	2640	115	S	2065	2250	2430							
	NR 36	115/113 L	10	L 120	TL	5.00 5.50	206 212	192 198		186 192				113	D	3915	4260	4600							
11.00 R 20	BF 13	150/146 K	16	K 110	TT	7.33	321	290		279				150	S		4380	4725	5070	5405	5735	6060	6380	6700	
	NR 32	149/145 K	16	K 110	TT	7.50	323	292		281				149	S		4460	4815	5160	5505	5840	6170	6500		
	NR 55	150/146 K	16	K 110	TT	8.00 8.50 9.00	329 335 340	297 302 307	1104	286 291 261	1082	498	3295	146 145	D D	7845 7960	8470 8595	9080 9215	9680 9820	10270 10420	10855 11015	11430 11600	12000		
12.00 R 20	BF 13	154/149 K	18	K 110	TT	7.33	346	307		301				154	S		4905	5290	5675	6050	6420	6785	7140	7500	
	BU 51	154/149 K	18	K 110	TT	8.00	354	314		308				149	D	8500	9175	9835	10485	11125	11760	12380	13000		
	BS 71	154/149 K	18	K 110	TT	8.50 9.00	360 366	319 324	1146	313 318	1122	515	3420												
365/80 R 20	NR 52	160/ - K	20	K 110	TL	10.00	0	379	1116	348	1092	501	3310	160	S		5620	6065	6505	6935	7360	7775	8190	8595	9000
245/70 R 17.5	BT 43	143/141 J	20	J 100	TL	6.75 7.50	270 279	250 258	803	240 248	789	360	2390	143 141	S S	3405 6435	3675 6945	3940 7445	4200 7935	4455 8420	4710 8900	4955 9370	5205 9835	5450 10300	
205/75 R 17.5	BF 14	124/122 M		M 130	TL	5.25 6.00 6.75	222 231 239	205 213 221	765	197 204 212	753	353	2295	124 122	S D	2125 3985	2310 4335	2495 4680	2675 5015	2850 5350	3025 6000	3200			
215/75 R 17.5	BF 14	126/124 M		M 130	TL	6.00	239	220	779	211	767	359	2340	135	S		2850	3075	3295	3515	3730	3940	4150	4360	
	BD 23	126/124 M		M 130	TL	6.75	246	228		219				126	S	2385	2595	2800	3005	3200	3400				
	BT 43	135/133 J		J 100	TL									133 124	D D	4490	4885	5275	5655	6030	6400	7450	7845	8240	
235/75 R 17.5	BF 14	132/130 L		L 120	TL	6.75 7.50	262 271	242 250	811	233 241	797	373	2430	143 132	S S	2520	3405 2745	3675 2960	3940 3175	4200 3385	4455 3590	4710 3795	4955 4000	5205 4835	5450 10300
	BT 43	143/141 J		J 100	TL									141 130	D D	4795	6435 5215	6945 5630	7445 6035	7935 6435	8420 6825	8900 7215	9370 7600		
265/70 R 19.5	BF 15	136/134 M		M 130	TL	6.75 7.50	286 295	264 272	881	254 262	867	401	2645	143 136	S S		3560 3235	3845 3495	4120 3745	4395 3995	4665 4235	4930 4480	5190 4810	5450	
	BT 43	143/141 J		J 100	TL	7.50 8.25	295 303	272 282	881	262 270	867	396	2645	141 134	D D	5635	6735 6130	7270 6615	7795 7090	8310 7560	8815 8020	9315 8480	9810	10300	
385/65 R 22.5	BU 49	160/ - K		K 110	TL	11.75	0	405	1092	389	1072	495	3250	160	S	5165	5620	6065	6505	6935	7360	7775	8190	8595	9000
	BT 43	160/ - K	20	K 110	TL	12.25		410		394															
425/65 R 22.5	BT 43	165/ - K	20	K 110	TL	13.00 14.00	0 0	447 457	1146	430 440	1124	514	3405	165	S	6190	6735	7270	7795	8310	8815	9315	9810	10300	
445/65 R 22.5	BT 43	169/ - K		K 110	TL	13.00	0	472	1174	454	1150	524	3485	169	S	6660	7245	7820	8385	8940	9485	10025	10555	11080	
	BS 49	168/ - K		K 110	TL	14.00		482		464				168	S	6430	6995	7550	8095	8630	9160	9675	10190	10695	
	BT 41	168/ - K	20	K 110	TL																			11600 11200	

1) Load index single/dual wheel fitment and speed symbol
2) TT = Tube Type, TL = Tubeless
3) For inflation pressure of 8,0 bar (116 psi) and over use valve slit cover plate

Specifications

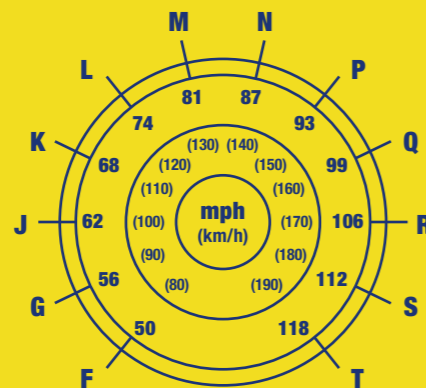
Size	Operating code					Rim		Tyre dimensions					Load index LI	Tyre fitment	Load capacity (kg) per axle at inflation pressure ³⁾ (bar) (psi)																		
	Pattern	LI/SI ¹⁾	PR	Speed Index and ref. speed (km/h)	TT/TL ²⁾	Rim width	Distance between rim centres	Max. standard value in service		Actual value		Stat. radius ± 1,5 %			Rolling circumference ± 2 %	4,5 (65)	5,0 (73)	5,5 (80)	6,0 (87)	6,5 (94)	7,0 (102)	7,5 (109)	8,0 (116)	8,5 (123)	9,0 (131)								
								Width	Outer-Ø	Width + 1 %	Outer-Ø ± 1 %																						
275/70 R 22.5	BC 31	148/145 J (151/148 E)	16	J 100 (E 70)	TL	7.50	303	279	974	267	961	447	2920	151	S	3960	4310	4650	4985	5315	5640	5960	6275	6590	6900								
						8.25	311	287		275			148	S	3615	3935	4245	4550	4855	5150	5440	5730	6015	6300									
														148	D	7235	7870	8495	9105	9710	10305	10885	11465	12035	12600								
														145	D	6660	7245	7820	8385	8940	9485	10025	10555	11080	11600								
315/70 R 22.5	BF 15	152/148 L (154/150 K)		L 120 (K 110)	TL	9.00	351	318	1032	312	1014	468	3090	154	S	4305	4685	5055	5420	5780	6130	6480	6825	7160	7500								
	BD 22	152/148 L (154/150 K)		L 120 (K 110)	TL									152	S	4265	4640	5010	5370	5725	6075	6420	6760	7100	7440	7785	8130	8475	8820	9165			
295/80 R 22.5	BF 15	152/148 M		M 130	TL	8.25	326	302	1062	290	1044	487	3185	152	S	4265	4640	5010	5370	5725	6075	6420	6760	7100									
	BD 22	152/148 M		M 130	TL	9.00	335	310		298				148	D	7575	8240	8890	9535	10165	10785	11395	12000	12600									
315/80 R 22.5	BU 54	156/150 K		K 110	TL	9.00	351	318	1096	312	1076	500	3280	156	S	4590	4995	5390	5780	6165	6540	6910	7280	7640	8000								
	BU 53	156/150 K		K 110	TL									154	S	4505	4905	5290	5675	6050	6420	6785	7140	7500	7860	8220	8580	8940	9300	9660			
	BF 15	154/150 M (156/150 L)		M 130 (L 120)	TL									150	D	8055	8760	9455	10140	10810	11470	12120	12765	13400									
	BS 73	156/150 K	18	K 110	TL																												
	BS 72	156/150 K	18	K 110	TL																												
	BD 22	154/150 M (156/150 L)	18	M 130 (L 120)	TL																												
11 R 22.5	BF 12	148/145 L	16	L 120	TL	7.50	305	282		271				148	S	3785	4120	4445	4765	5080	5390	5695	6000	6300									
	BU 53	148/145 K	16	K 110	TL	8.25	314	290	1070	279	1050	489	3200	145	D	6970	7585	8185	8775	9355	9930	10490	11050	11600									
	BD 21	148/145 L	16	L 120	TL																												
12 R 22.5	BF 12	152/148 L (150/148 M)	16	L 120 (M 130)	TL	8.25	329	304	1104	292	1084	504	3306	152	S	4265	4640	5010	5370	5725	6075	6420	6760	7100									
	BU 54	152/148 K	16	K 110	TL									150	S	4225	4600	4960	5320	5670	6020	6360	6700	7040	7380	7720	8060	8400	8740	9080			
	BU 53	152/148 K	16	K 110	TL									148	D	7575	8240	8890	9535	10165	10785	11395	12000	12600									
	BD 22	152/148 L	16	L 120	TL																												
	BS 73	152/148 K	18	K 110	TL																												
	BS 72	152/148 K	18	K 110	TL																												
13 R 22.5	BU 54	154/150 K (156/150 G)	18	K 110 (G 90)	TL	9.00	350	318	1146	312	1124	521	3428	154	S	4590	4995	5390	5780	6165	6540	6910	7280	7640	8000								
	BU 52	154/150 K	18	K 110	TL									156	S	4505	4905	5290	5675	6050	6420	6785	7140	7500	7860	8220	8580	8940	9300				
	BS 73	154/150 K (156/150 G)	18	K 110	TL									150	D	8055	8760	9455	10140	10810	11470	12120	12765	13400									
	BS 72	154/150 K	18	K 110	TL																												
18 R 22.5	NR 15	168/ - J	20	J 100	TL	14.00	0	457	1158	450	1158	528	3532	168	S			8295	8895	9485	10065	10635	11200										
	NR 27	168/ - J	20	J 100	TL																												

1) Load index single/dual wheel fitment and speed symbol
2) TT = Tube Type, TL = Tubeless
3) For inflation pressure of 8,0 bar (116 psi) and over use valve slit cover plate

Load Indices (LI)

LI	KG	LI	KG	LI	KG
110	1060	132	2000	154	3750
111	1090	133	2060	155	3875
112	1120	134	2120	156	4000
113	1150	135	2180	157	4125
114	1180	136	2240	158	4250
115	1215	137	2300	159	4375
116	1250	138	2360	160	4500
117	1285	139	2430	161	4625
118	1320	140	2500	162	4750
119	1360	141	2575	163	4875
120	1400	142	2650	164	5000
121	1450	143	2725	165	5150
122	1500	144	2800	166	5300
123	1550	145	2900	167	5450
124	1600	146	3000	168	5600
125	1650	147	3075	169	5800
126	1700	148	3150	170	6000
127	1750	149	3250		
128	1800	150	3350		
129	1850	151	3450		
130	1900	152	3550		
131	1950	153	3650		

Speed-Index (SI)



Publisher's imprint

The content of this publication is provided for information only and without responsibility. Continental Ltd. makes no representations about the accuracy, reliability, completeness or timeliness of the information in this publication. Continental Ltd. may, in its sole discretion, revise the information contained herein at any time without notice.

Continental Ltd.'s obligations and responsibilities regarding its products are governed solely by the agreements under which they are sold. Unless otherwise agreed in writing, the information contained herein does not become part of these agreements. This publication does not contain any guarantee or agreed quality of Continental Ltd.'s products or any warranty of merchantability, fitness for a particular purpose and noninfringement. Continental Ltd. may make changes in the products or services described at any time without notice.

This publication is provided on an "as is" basis. To the extent permitted by law, Continental Ltd. makes no warranty, express or implied, and assumes no liability in connection with the use of the information contained in this publication. Continental Ltd. is not liable for any direct, indirect, incidental, consequential or punitive damages arising out of the use of this publication. Information contained herein is not intended to announce product availability anywhere in the world.

The trademarks, service marks and logos (the Trademarks) displayed in this publication are the property of Continental Ltd. and/or its affiliates. Nothing in this publication should be construed as granting any license or right to the Trademarks. Without the express written consent of Continental Ltd. the use of the Trademarks is prohibited.

All text, images, graphics and other materials in this publication are subject to the copyright and other intellectual property rights of Continental Ltd. and/or its affiliates. Continental Ltd. owns the copyrights in the selection, coordination and arrangement of the materials in this publication. These materials may not be modified or copied for commercial use or distribution.

Copyright © 2010 Continental Ltd.
All rights reserved



In the year 1998 Barum Continental Ltd. received the certificate TÜV CERT according to ISO 9001, QS-9000 and VDA 6.1 standards. Companies receiving this certificate meet the highest standards required in development and production.



In June 1997 Barum Continental Ltd. was awarded a certificate by the German Technical Inspectorate TÜV Rheinland confirming that its environmental policies, platform and management systems were in accordance with the requirements of EU 1836/93 Standard. It was the first company outside the EU to achieve this.

ES
1836/93



In June 1997 the German Technical Inspectorate TÜV Rheinland awarded Barum Continental Ltd a certificate for its Environmental Management System according to ISO 14 001 Standard.

Continental AG · Büttnerstraße 25 · 30165 Hannover · Germany



Good tyres. Good deal.